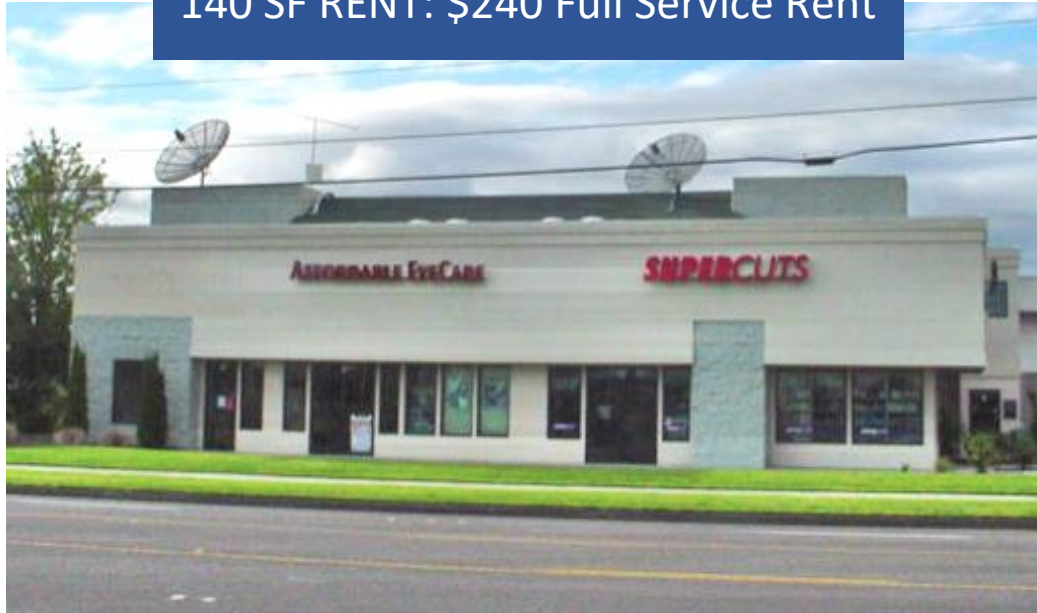


FOR LEASE

- Office Space -

Small 2nd Floor Office Suite
4222 Commerce Street Ste 2C
Eugene, Oregon

140 SF RENT: \$240 Full Service Rent



4222 Commerce Street Ste 2C Eugene, Oregon
(NW corner of W. 11th Avenue & Commerce Street)

<u>Suite</u>	<u>Size</u>	<u>Rent</u>
2C	140 SF	\$240/ Month (Full Service)

- **Near Beltline Freeway, Super Walmart, Target, EMX terminal**
- **Available: NOW - Retail tenants: Supercuts, T-Mobile**
- **Two shared restrooms. Second floor (no elevator)**

PENNINGTON REALTY, INC.

1144 Gateway Loop Suite 205
Springfield, OR 97477

Office: (541) 344-5959

Cell (John): (541) 579-4600

Cell (Jack): (541) 513-0918

Email: Jack@Jpennington.com

Email: John@Jpennington.com

JACK PENNINGTON
JOHN PENNINGTON, CCIM

4222 COMMERCE STREET

Eugene, Oregon

- 2nd Floor Office Suites -

