



# FOR SALE

## 3 Country Lots in Jasper Estates

- Address: 36985 Wallace Creek Road  
Springfield, OR
- Close-in country estate parcels in gated subdivision
- Beautiful, panoramic views
- Utilities are to the properties. Septic systems are approved.
- 1 mile north of Bob Straub Pkwy for easy-commuting. 7 min drive to I-105.
- ~~#5: \$295,000 / 5.9 acres~~
- #6: \$265,000 / 6.0 acres
- #10: \$299,000 / 10.27 acres
- [Aerial Tour Jasper Estates](#)



**JACK PENNINGTON**  
Office: 541-344-5959  
Cell: 541-513-0918  
Email: [Jack@Jpennington.com](mailto:Jack@Jpennington.com)

**JOHN PENNINGTON**  
Cell: 541-579-4600  
Email: [John@Jpennington.com](mailto:John@Jpennington.com)



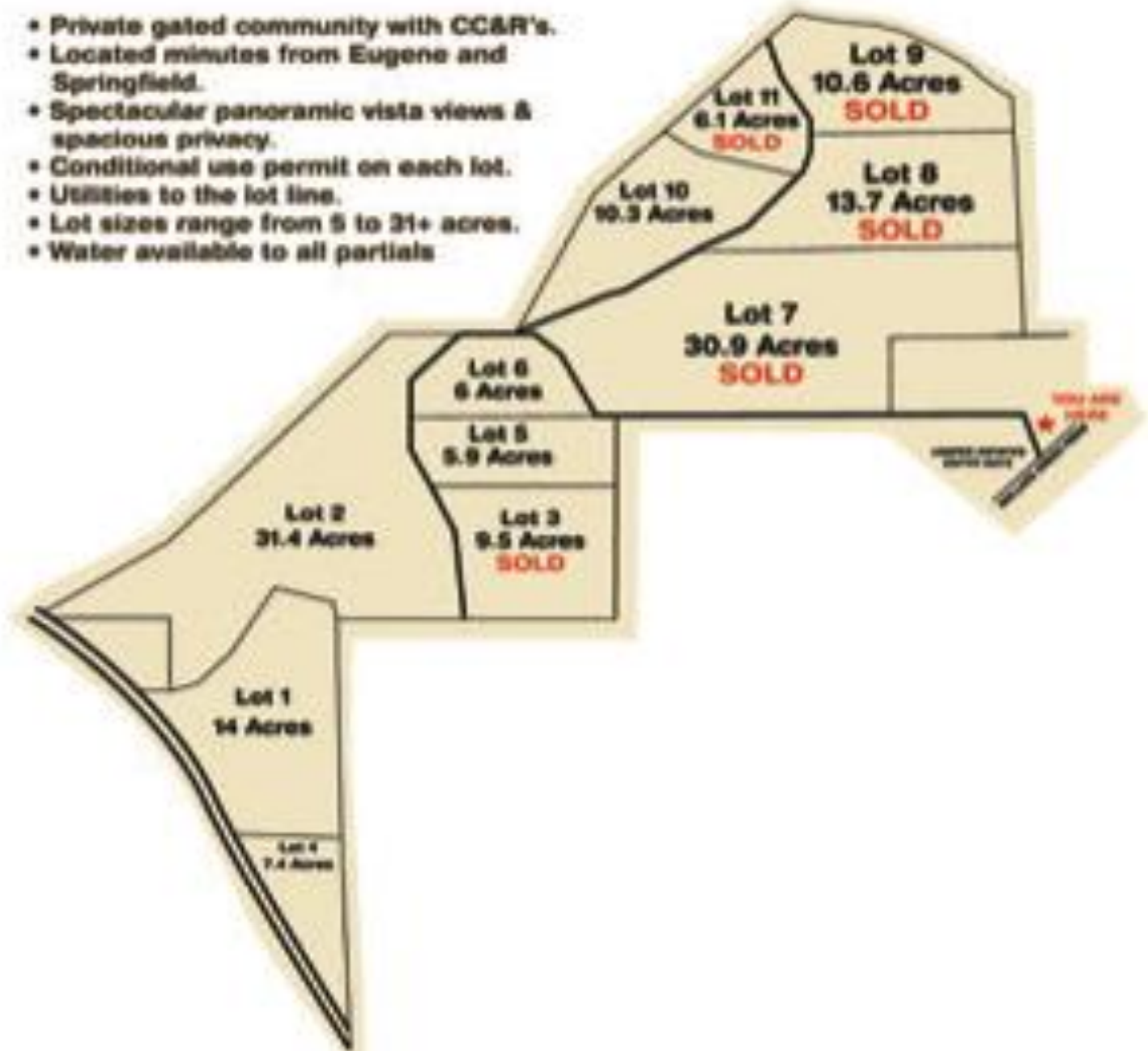
This information has been secured from sources deemed to be reliable. However, no warranty or guaranty is made by Owner or owner's agent as to the accuracy thereof and is subject to changes, errors, and omissions

# MAP VIEW



- Lots #5 & #6 share a well that pumps approximately 100 GPM. Lot #10 has its own well
- Access to lot #5 is a shared, paved driveway with lot #3
- No HOA Fees
- Gated subdivision
- Zoning: F2
- Schools: Pleasant Hill

- Private gated community with CC&R's.
- Located minutes from Eugene and Springfield.
- Spectacular panoramic vista views & spacious privacy.
- Conditional use permit on each lot.
- Utilities to the lot line.
- Lot sizes range from 5 to 31+ acres.
- Water available to all partials



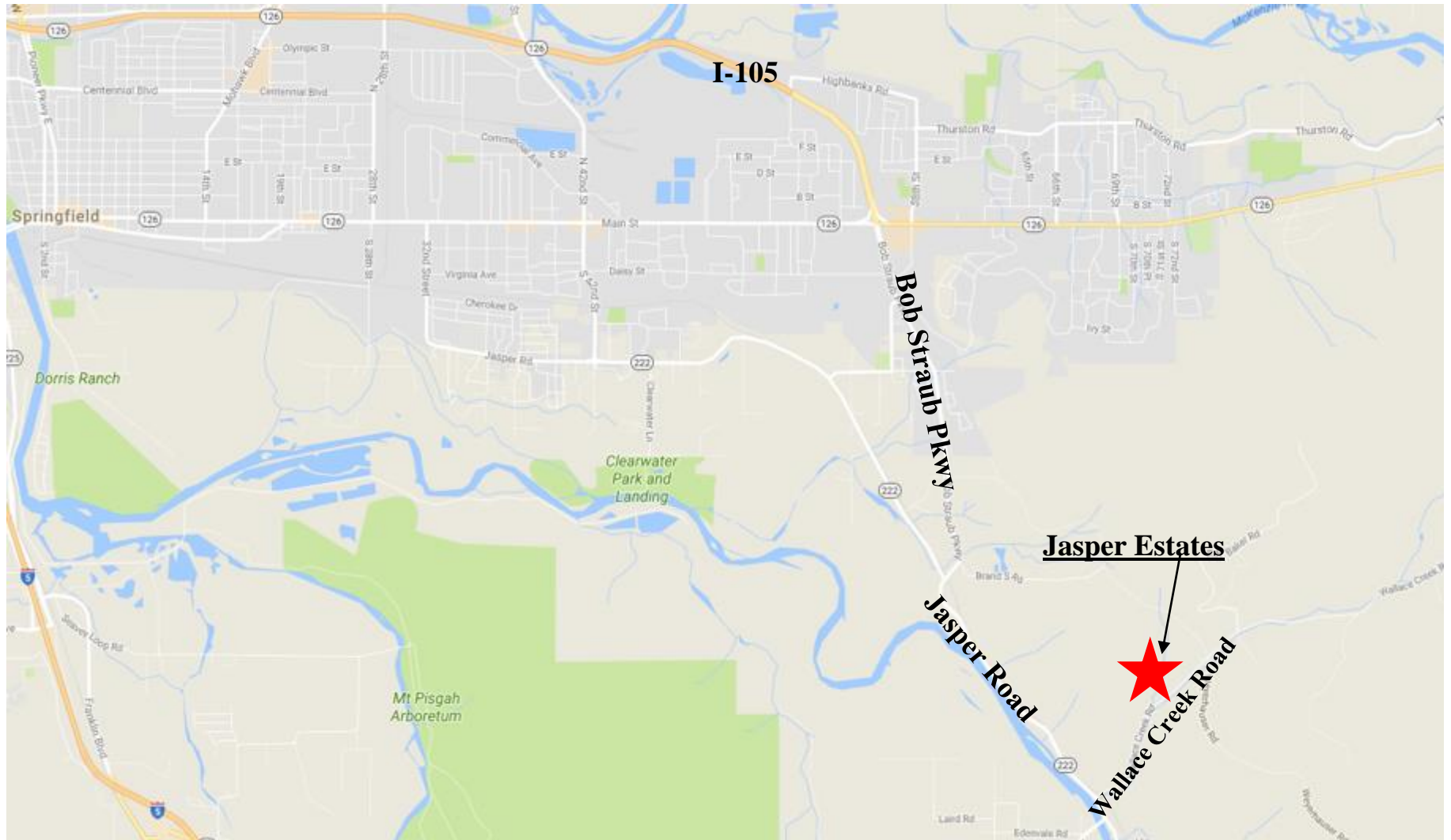








# DRIVING DIRECTIONS





# AERIAL OF JASPER ESTATES

